

15

1502 06

## Jack connectors



Jack chassis socket acc. to JIS C 6560 JC35J3A, 3.5 mm, 3 poles/stereo, upright version, for printed circuit boards

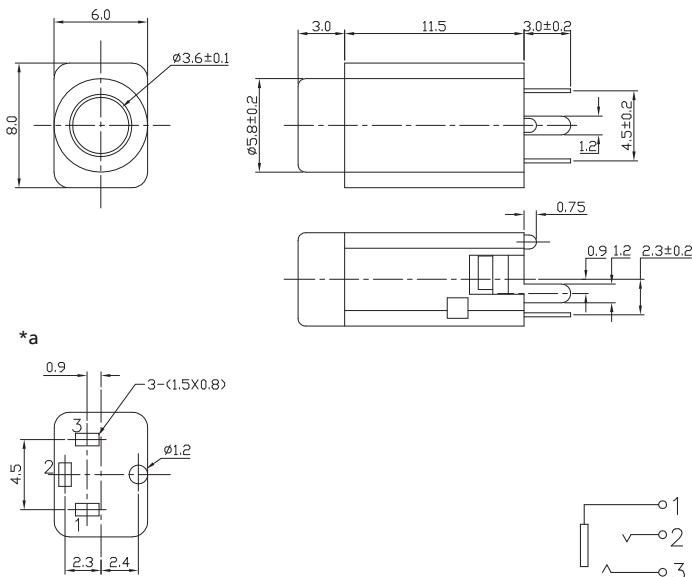
---

State: Obsolete

---

15

1502 06



\*a printed circuit board layout, components side view

#### Environmental conditions

Temperature range -25 °C/+70 °C

#### Materials

Insulating body PBT, V-0 according to UL94  
Contact spring CuSn, silver-plated

#### Mechanical data





Mating cycles 5000  
Insertion force 3–30 N<sup>1</sup>  
Withdrawal force 3–30 N<sup>1</sup>

<sup>1</sup> measured with a gauge plug

#### Electrical data (at T<sub>amb</sub> 20 °C)

Contact resistance ≤ 30 mΩ  
Rated current 1 A  
Rated voltage 12 V  
Rated impulse voltage 500 V/60 s  
Insulation resistance ≥ 100 MΩ

#### Associated products

Counterparts  
 1532 07  KLS 40  KLS 44  
 WKLS 40

15

1502 06

| Designation | Pole Number | PU (Pieces) | MDQ (Pieces) |
|-------------|-------------|-------------|--------------|
| 1502 06     | 3           | 1000        | 1000         |

**Packaging:**

in bulk, in a cardboard box or a plastic bag